

# New Observations about Fourth Century BC Clazomenian Trade Amphoras

**Caner Atila – Emre Okan**

Assistant Professor Dr., Cumhuriyet University, Department of Archaeology,  
Sivas/Turkey, E-mail: caner.atila@hotmail.com – Assistant Professor Dr., Düzce  
University, Department of Archaeology, Düzce/Turkey

## MÖ 4. YÜZYIL KLAZOMENAI AMPHORALARI ÜZERİNE YENİ GÖZLEMLER

### Öz

*Bu çalışmada, Phokaia’da bulunan ve MÖ 4. yüzyıla tarihlendirilen “Klazomenai amphoraları” (Bir diğer deyişle “Ağız Altı Plastik Bantlı Amphoralar) incelenmiştir. Bu amphoralar ilk kez Klazomenai’da bulunmuş ve Klazomenai amphoraları olarak kabul edilmiştir. Phokaia buluntuları form bakımından Klazomenai örneklerine benzemekle birlikte, kil özellikleri tamamen farklı bir yapı sergiler. Phokaia kazılarında henüz bir fabrika atığına ve atölyeye rastlanmamıştır.*

*Bu amphoralar, Klazomenai’da MÖ 4. yüzyılın üçüncü çeyreğine kadar tarihlendiği halde, Phokaia’da kontekst buluntular yardımıyla MÖ 4. yüzyılın sonlarına kadar üretildiği anlaşılmıştır. Bu amphoralara Phokaia’da her sektörde yoğun rastlanması, üretimin daha geç döneme kadar devam etmesi ve farklı bir kil özelliğine sahip olması, bu amphoraların Klazomenai dışında bir merkezde de, olasılıkla Phokaia, üretilmiş olduğunu düşündürmektedir.*

**Anahtar Sözcükler:** Amphora, Klazomenai, Phokaia, Ticari Amphoralar, MÖ 4. Yüzyıl Amphoraları.

### Abstract

*In this study, “Fourth Century BC Clazomenian Trade Amphoras” (in other words; Plastic Banded Amphoras) found in Phocaea are examined. These amphoras have firstly been discovered in Clazomenae and considered as Clazomenaeen amphoras. Phocaeen finds are similar to Clazomenaeen samples, yet they differ in clay features. No factory waste or workshops have been discovered in Phocaea excavations yet.*

*Although these amphoras in Clazomenae are dated to the third quarter of the fourth century BC, with the aid of finds from contexts in Phocaea, it is clarified that these type of amphoras have been produced to the end of the fourth century BC. These amphoras are intensively recovered at every area and the production had continued to a later phase. In addition, amphoras with different featured clay are found. One may infer that these have also been produced somewhere else other than Clazomenae, presumably in Phokaia.*

**Keywords:** Amphorae, Clazomenai, Phocaea, Trade Amphoras, 4th Century BC Amphoras.

### Introduction

“**P**lastic Banded Amphoras” have been identified by Doğer for the first time in 1982 (Doğer 1982: 19-21). Doğer has self-possessedly mentioned that these amphoras may have been probably produced in Clazomenae. With on-going excavations these amphora fragments have been intensively recovered at Clazomenae settlement levels and some production waste have been found. Due to these evidences, Doğer has indicated that these amphoras have been produced in Clazomenae, in his later Works

(Doğer 1986: 469, fig. 15-16, Type A-B; Doğer 1990a: 107-108, figs 115-116; Doğer 1990b: 707, figs 10-11, Tip Va-Vb).

These amphoras have been recovered at Clazomenae (Doğer 1982: lev. XI, no. 30; Doğer 1986: figs 15-16; Doğer 1990a: figs 115-116; Doğer 1990b: figs 10-11; Hasdağlı 2012: figs 9, 12, no. 57-61; Özbay 2006: 209, 233, 337, 352; Hürmüzlü 2004: fig. 22), Smyrna (Akurgal 1993: fig. 64b), Erythrai, Cyme, Leukai (Doğer 1990b: 706, The amphoras recovered in these three centers are not published, yet E. Doğer has examined the artifacts), Thassos (Blonde et al. 1991: 233, fig. 9, no. 55), Halicarnassus (Doğer 1990b: 707, One amphora recovered from the sea off Bodrum is in this type, but is not published yet. Bodrum Museum of Underwater Archaeology, inv. no. 1111; Mouselleion 7: pl. 19, G47), Abdera (Dupont and Skarlatidou 2012: 253, fig. 11) and Phocaea (Selçuk 1998: lev. 20-28, no. 57-91). Especially in Clazomenae and Phocaea, these fragments have intensely been recovered (There is no number has been stated about Clazomenaen finds. In Phocaea, 120 pieces of mouth and neck pieces of plastic banded amphoras have been determined by us). Samples from Phocaea have been found in below-mentioned areas.

### **Halise Erensoylu Area**

This area which belongs to Halise Erensoylu takes place in Fevzipaşa Quartes, Street 189. The excavations have been held during 1995-1996 in this sector which is in modern city centre now and settlement traces from Archaic to Roman Period has been encountered (Özyiğit 1997: 2-5). The cultural layer here starts from 242 cm from the sea level and shows continuity to 60 cm. Most of the plastic banded amphora fragments have been recovered in this sector. Whether the amphoras have been recovered between 200-60 cm elevation, 6 fragments are from above 160 cm elevation, only 1 from lower 80 cm elevation, nearly 40 fragments have been recovered at an elevation between 160-180 cm. Because of the upper layers in this sector date between Hellenistic and Roman Periods and lower layers date between Early Classical and Archaic Periods, the recovering position of the amphoras indicate that these are on their in-situ layer and has importance due to dating.

### **Maltepe Tumulus**

The excavations of Maltepe Tumulus held in 1990, 1992 and 1994 (Özyiğit 1996: 7). Only %10 of the tumulus have been excavated, yet thousands of pottery fragments have been recovered. An Archaic city wall takes place at the lowest layer of the tumulus. The tumulus has been constructed on this wall and pottery gathered around the middens, consist the filling of the tumulus. Pottery recovered in this filling date between the second half of fourth century BC and the first half of second century BC (Özyiğit 1996: 8). There are amorph pieces and slags have been found among the pottery and this indicates that some of the pottery are the wastes of a ceramic workshop. There is dispersed pottery dating to Roman Period, on the top level of the tumulus. The tumulus has been used as pottery midden of the city in Roman Period.

In the filling which dates back to the construction date of the Tumulus, which also consists plastic banded amphoras, there are 3 different layers.

First layer is the top layer and has brown earth.

Second layer is in the midst and is covered with ashy earth.

Third layer is at the bottom and is covered with yellow earth. Too few fragments have been recovered in this layer (Özyiğit 1996: 8).

These layers are not occurred in the course of time, yet they are brought together by the material gathered around middens during the construction of the tumulus. Accordingly, these do not consist a stratigraphy. Nevertheless, all the three layers date after the second half of fourth century BC, and this matter is important for our subject.

### **Excavations Nearby Graveyard**

Movable and immovable artefacts and pottery have been encountered dating between Archaic to Byzantine Period in the excavations which have been held in a considerable narrow zone (Özyiğit 1996: 2-4).

### **Government Office Area**

Some archaeological artefacts were found in 1990 during the foundation of Government Office. Then, archaeological excavations were started this area. The pottery found in disorganized positions date between Archaic to Roman Periods (Özyiğit 1992: 104-105).

### **Mosaics Area**

Mosaics Area has an important stratigraphy for Phocaea excavations. The stratigraphy continuous from Archaic to Roman Period. Three floors dating to Classical and Hellenistic Periods have been found, which involves us closely.

First Floor is at 1,31 m level and dates to Early Classical Period, due to the pottery recovered just on the floor.

Second Floor is at 1,81 m level and dates to Late Classical Period, due to the evidence recovered.

Third Floor is at 2,06 m level and dates to Hellenistic Period (Özyiğit 1995: 434-435).

### **Typology**

Doğer has distinguished plastic banded amphoras as two different types based on the intact samples from Clazomenae, Smyrna and Bodrum (Doğer 1986: 469, figs 15-16, Type A-B; Doğer 1990b: 707, figs 10-11, Tip Va-Vb).

**Type I:** (Fig. 2: The amphora in fig. 2 has been drawn based on the intact profiled amphora in Doğer 1990b: fig. 10).

Type I has slightly out rolled rim and thick plastic band under the rim. Plastic band apart from the rim by a deep or a shallower groove, that varies for samples. The form has a neck with a cylindrical upper part, widening to shoulder; long, conical body; a button-shaped base with a slight hollow beneath and stick formed, elliptical sectioned handles. Some of the samples have light creamy or yellowish slip



**Fig. 1:** Chian New Style Amphora, end of the fifth century BC. **Fig. 2:** Plastic banded amphora, Type I.

on the surface (Doğer 1990b: 707) (cat. no. 4, 6, 10, 12). In some Type I examples recovered in Klazomenai have conical foot with plastic band, instead of button-shaped base (Hasdağlı 2012: fig. 9, no. 57).

Type I, resembles Chian amphoras (Fig. 1: fig. 1 has been drawn based on Grace 1979: pl. 45.1) which appeared for the first time at the end of the fifth century BC and have been called as “new style” and the first production date for Type I is the end of the fifth Century BC (Doğer 1990b: 707). The base form has been button-shaped for the early periods, as it has been in Chian new style amphoras, later on it must have evolved to the standard form with plastic band.

**Type II** (Fig. 3: The amphora in fig. 3 has been drawn based on the intact profiled amphora in Doğer 1990b: fig. 11).

Type II resembles Type I in regard to rim form, yet the rim is larger and the neck is shorter. Shoulder and body is distinctly tumid and despite the conical view of Type I, Type II has a tumid-ovoid pattern. Because of shoulder is wide and neck is short, the handles have taken bow form. Type II has conical or cylindrical foot with thick plastic band.

Selçuk has dated and classified the plastic banded amphoras recovered in Phocaea before (Selçuk 1998: 47-56, no. 58-91). Selçuk has divided the amphoras in 11 different mouth-neck type (Selçuk 1998: 49-53), 7 different base types (Selçuk 1998: 54-57) and suggested a chronological development due to their finding positions. We think that millimetric distinctions shouldn't cause to divide the amphoras in different types for these kind of amphoras. These kind of tiny diversities can even be seen in amphoras which have been produced in the same workshop, in the same day. Besides, there is no complete profiled plastic banded amphora has been recovered in Phocaea up to the present. Consequently, I abide by Doğer's classification and think that the form has two types, and has been produced from the end of fifth century BC to the end of fourth century BC, with small changes.

## Fabric

Doğer indicates that these amphoras have a clear fabric, scarce lime inclusions and the colour changes from red to yellow (Doğer 1986: 489). As for Hasdağlı, "The fabric is in red or yellow tones with some micaceous, sand, lime inclusions and few black/brown inclusions" (Hasdağlı 2012: 137). Amphoras which match with Doğer's and Hasdağlı's definitions have been recovered in fabric manner. Yet, there is also a group that doesn't answer to the description and totally different. Therefore, these type of amphoras indicate two different workshops (Fig. 4).

*Fabric I* (Cat. No. 1-12): The amphoras in this group, answer to Hasdağlı's description. Fabric is clear, and inclusions are thin grain, scarce sand, scarce lime, scarce mica, in some examples scarce black-brown additive is joined. The fabric has hard characteristics, well kneaded and fired. The colour of clay has the tones of reddish yellow (like 7,5 YR-6/6; 7,5 YR-6/8; 5 YR-7/8). Some samples have yellow or cream slip (cat. no. 4, 6, 10, 12). Because of production wastes of this kind have been found in Clazomenae, Fabric I must be Clazomenae production.

*Fabric II* (Cat. No. 13-32): The fabric features of this group differ from the first group in all manners. The clay is raw-looking. It has intense coarse sand, coarse lime, few micaceous inclusions, intense raw looking black additive and grits which can also be observed from the surface. The fabric is hard. Yet, because of the firing condition is not good, tone diversity can be observed in the fabric. The clay has light grey, greyish brown, dark brown colours, which is darker than first group. Some amphoras of this group have a thin slip in light cream, grayish cream colours (cat. no. 14, 16-17, 24-25, 29, 32).

## Dating

These amphoras must have been produced from the end of fifth Century BC (For comparison Chian New Style and Plastic banded amphoras see Fig. 1 and Fig. 2) with the influence of Chian "New Style" as Doğer has afore mentioned (Doğer 1990b: 707). Doğer indicates that these type of amphoras have been produced in Clazomenae in fourth century BC, without a further thought about the chronology. Samples recovered from the settlement levels of Clazomenae have been dated to the first half of the fourth century BC by Özbay (Özbay 2006: 209, 233, 337, 352). Hasdağlı has dated the amphoras which have been recovered from Well 2, Layer



Fig. 3: Plastic banded amphora, Type II.

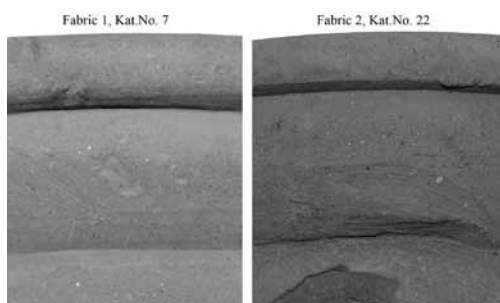


Fig. 4: Fabric 1 and 2.

II, to the second quarter of fourth century BC, at the very latest (Hasdağlı 2012: 137-138). Intact samples of Type I and II have been recovered from the layer dating between 380-350 BC, of these wells (Hasdağlı 2012: 137, pl. 9, no. 57-61). Intact amphoras found in Smyrna date between 350-325 BC (Akurgal 1993: fig. 65b-c). Plastic banded amphoras recovered in Abdera, which is a colony of Clazomenae, also date fourth century BC (Dupont and Skarlatidou 2012: 253, fig. 11).

One of the samples recovered in Phocaea cat. no. 1, is one of the earliest example of this group. This piece have been recovered from Mosaics Area, of the first layer. This layer dates to fifth century BC. Cat. no. 1 refers to Fabric 1 in the manner of clay features and must have been produced in Clazomenae.

The lowest layer of Halise Erensoylu sector, the elevation between 80-60 cm dates to fifth century BC. Cat. no. 2-3, 9 have been recovered from this layer. These samples indicate Clazomenae production. 80-200 cm elevation of Halise Erensoylu sector dates to fourth century BC. 40 pieces of plastic banded amphoras have been recovered from these elevations and this indicates the intensive production period of these amphoras.

181-206 cm elevations of Mosaics Area, date between 400-330 BC and cat. no. 26-27 have been recovered from these elevations.

The Maltepe Tumulus filling gives important clues for dating. Cat. no. 28-29 have been recovered in the second filling layer, with a Thassos stamped amphora handle dating between 314-309 BC (Okan and Atila 2015: Thassos Mühürleri, res. 3). Cat. no. 30 has been recovered with a Thassos stamped handle dating 297-293 BC (Okan and Atila 2015: Thassos Mühürleri, res. 4). These example gives us that the production of plastic banded amphoras have begun at the end of fifth century, intensified in the first and second quarter of the fourth century BC, then the production decreased and probably continued to the end of the fourth century BC.

## **Result and Conclusion**

Plastic banded amphoras must have been produced for the first time at the end of the fifth century in Clazomenae, with the influence of Chian "New Style" amphoras, as Doğer has mentioned. The earliest plastic banded samples from Phocaea refer to Fabric 1 (cat. no. 1), which is Clazomenae production, supports this idea. This type, which have been intensively produced in Clazomenae and acknowledged as overseas trade product as can be seen in Bodrum and Abdera, must have been started to be produced in Phocaea in this century. Yet, the Phocaeen finds show that this type of amphoras have been produced until the end of fourth century BC. It is acknowledged that Clazomenae has produced quality wine from the end of seventh century BC to the end of sixth century BC. At the end of the fifth century BC, Clazomenae amphora and wine have become popular again with plastic banded amphoras, which is a new form. With the abandonment of the settlement in Clazomenae mainland in the middle of fourth century BC (After Satrap Rebellion, 366-356 BC, the settlement dating to fourth century BC in Clazomenae has been abandoned, a ceramic workshop has been in service starting from the third quarter of the fourth century BC (Özbay 2006: 41, 46) plastic banded amphora production must have ended. Yet, the popular Clazomenae amphoras contin-

ued to be produced in another center (Fabric 2). This center is probably Phocaea. There is no kind of fact and figures have been recovered about production of plastic banded amphoras in Phocaea until today. Yet, recovering a few pieces in the centers aside Clazomenae and again, recovering 120 pieces of amphora in fourth century BC levels in Phocaea, which have been purposely excavated, made us reach this opinion. Besides, Phocaea has been an important pottery production center, and has imitated popular vase and amphora forms (It is determined by us that Chian, Okan et al. 2015) and Greco-Italic amphoras' imitations, publish works on this subject is in progress) have been produced in Phocaea. This situation also supports our idea.

When the clay features are examined, we see two groups different from each other (Fig. 4). The amphoras which is indicated as Clazomenae production (Fabric 1, cat. no. 1-12) have higher quality, clean clay, and are better fired. Amphoras which we think of Phocaea production, (Fabric 2, cat. no. 13-32) have, intense additives, raw looking and not very well fired clay.

When the form features are examined, we see that the form is separated in two main groups, as Doğer has mentioned. The finds recovered from Clazomenae wells show that both of the groups have been produced in the same period (Hasdağlı 2012: 137, pl. 9). Hasdağlı, made an accurate determination about the form variety. He claims that the form variety does not have a chronological reason yet the necessity for different capacities of amphoras caused two types of amphora to be produced. The plastic band under the rim apart with a hollow groove in some of the forms or a thin line in some. This is not about chronology, form or workshop. This is a feature which can be seen in every period and every form.

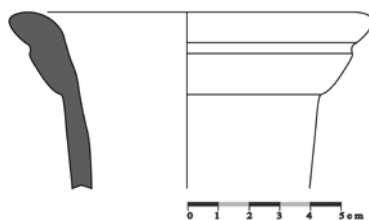
As conclusion, plastic banded amphoras have been produced from the end of the fifth century BC to the end of fourth century BC, in two forms and in two production centers (Clazomenae and Phocaea?) with having slight variant distinctions.

## CATALOG

### 1 (Fabric I)

D: 11,2 cm; H: 5,5 cm; Sector: Mosaics area; Trench: G-5; Level: 197-104 cm; Fabric: Little sand, lime and mica inclusions, well fired, yellowish red (7,5 YR-6/6). Reddish yellow surface.

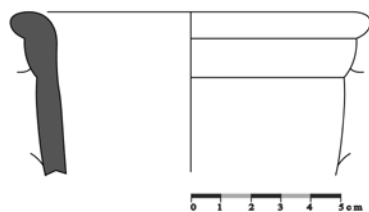
Date: End of fifth century-beginning of fourth century BC



### 2 (Fabric I)

D: 11 cm; H: 5,2 cm; Sector: Halise Erensoylu; Trench: H-6; Level: 90-60 cm; Fabric: Same as No 1. Reddish yellow surface.

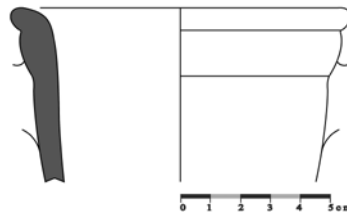
Date: End of fifth century-beginning of fourth century BC



### 3 (Fabric I)

D: 10,8 cm; H: 5,7 cm; Sector: Halise Erensoylu; Trench: H-6; Level: 75-60 cm; Fabric: Same as No 1. Reddish yellow surface.

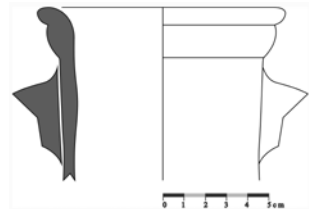
Date: End of fifth century-begining of fourth century BC



### 4 (Fabric I)

D: 11,4 cm; H: 7 cm; Sector: Halise Erensoylu; Trench: H-8; Level: 160-150 cm; Fabric: Same as No 1. Cremy slip on outside.

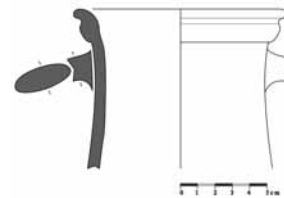
Date: fourth century BC



### 5 (Fabric I)

D: 11,6 cm; H: 9 cm; Sector: Halise Erensoylu; Trench: H-8; Level: 130-120 cm; Fabric: Same as No 1. Reddish yellow surface.

Date: fourth century BC



### 6 (Fabric I)

D: 13,6 cm; H: 7,5 cm; Sector: Halise Erensoylu; Trench: H-8; Level: 130-120 cm; Fabric: Same as No 1. Cremy slip on outside.

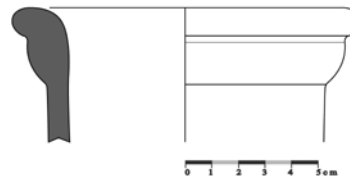
Date: fourth century BC



### 7 (Fabric I)

D: 12 cm; H: 4,7 cm; Sector: Halise Erensoylu; Trench: H-8; Level: 130-120 cm; Fabric: Same as No 1. Reddish yellow surface.

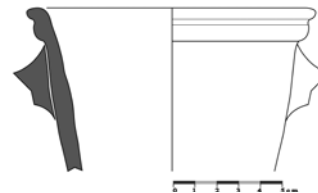
Date: fourth century BC



### 8 (Fabric I)

D: 12,4 cm; H: 8,8 cm; Sector: Halise Erensoylu; Trench: H-5; Level: 141-131 cm; Fabric: Same as No 1. Reddish yellow surface.

Date: fourth century BC



### 9 (Fabric I)

D: 2,6 cm; H: 6,5 cm; Sector: Halise Erensoylu; Trench: H-8; Level: 85-75 cm; Fabric: Same as No 1. Reddish yellow surface.

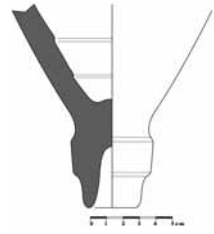
Date: End of fifth century-begining of fourth century BC



**10 (Fabric I)**

D: 2,8 cm; H: 9,2 cm; Sector: Halise Erensoylu; Trench: H-8; Level: 130-120 cm; Fabric: Same as No 1, Pale light brown slip on outside.

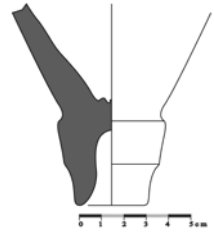
Date: fourth century BC



**11 (Fabric I)**

D: 2,8 cm; H: 8,4 cm; Sector: Halise Erensoylu; Trench: H-5; Level: 158-141 cm; Fabric: Same as No 1. Reddish yellow surface.

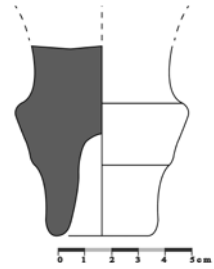
Date: fourth century BC



**12 (Fabric I)**

D: 4,2 cm; H: 3,2 cm; Sector: Halise Erensoylu; Trench: H-7; Level: 120-110 cm; Fabric: Same as No 1. Creamy slip on outside.

Date: fourth century BC



**13 (Fabric II)**

D: 11,2 cm; H: 15,9 cm; Sector: Mozaics area; Fabric: Too much sand, lime, little mica and a few little stone inclusions. Brown (7,5 YR5/4), hard and good fired clay. Light brown surface.

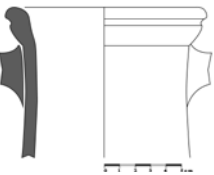
Date: fourth century BC



**14 (Fabric II)**

D: 12,2 cm; H: 10 cm; Sector: Mozaics area; Fabric: Same as No. 13. Creamy slip on surface.

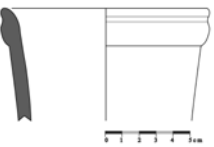
Date: fourth century BC



**15 (Fabric II)**

D: 12 cm; H: 7,7 cm; Sector: Halise Erensoylu, North of the Archaic sondage; Level: 100-87 cm; Fabric: Same as No. 13. Light brown surface.

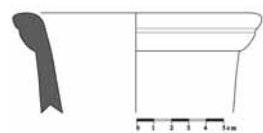
Date: fourth century BC



**16 (Fabric II)**

D: 12,6 cm; H: 5,4 cm; Sector: Halise Erensoylu, North of the Archaic sondage; Level: 100-87 cm; Fabric: Same as No. 13. Light thin creamy slip on surface.

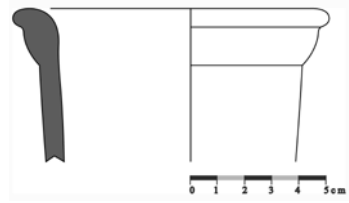
Date: fourth century BC



**17 (Fabric II)**

D: 10,5 cm; H: 5,4 cm; Sector: Halise Erensoylu;  
Trench: H-8; Level: 124-114 cm; Fabric: Same as No.  
13. Light thin creamy slip on surface.

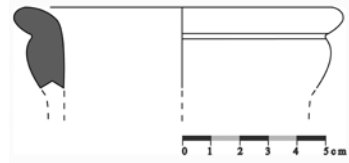
Date: fourth century BC



**18 (Fabric II)**

D: 10,6 cm; H: 2,5 cm; Sector: Halise Erensoylu;  
Trench: H-8; Level: 160-150 cm; Fabric: Same as No.  
13. Reddish yellow surface.

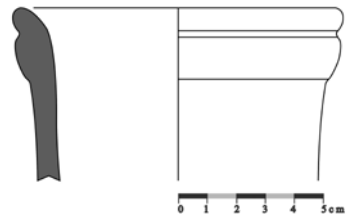
Date: fourth century BC



**19 (Fabric II)**

D: 11,4 cm; H: 6 cm; Sector: Halise Erensoylu; Trench:  
H-8; Level: 115-105 cm; Fabric: Same as No. 13. Light  
Brown surface.

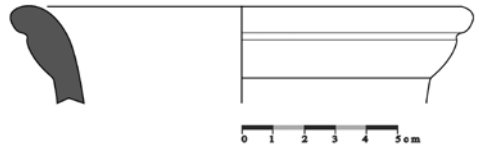
Date: fourth century BC



**20 (Fabric II)**

D: 14 cm; H: 3,4 cm; Sector: Halise Erensoylu;  
Trench: H-6; Level: 156-123 cm; Fabric:  
Same as No. 13. Light Brown surface.

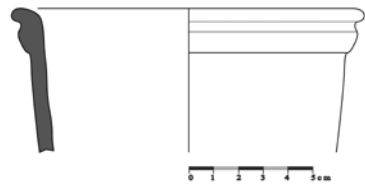
Date: fourth century BC



**21 (Fabric II)**

D: 13,6 cm; H: 6 cm; Sector: Halise Erensoylu; Trench:  
H-6; Level: 185-175 cm; Fabric: Same as No. 13.  
Brown surface.

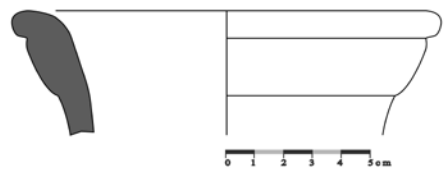
Date: fourth century BC



**22 (Fabric II)**

D: 14 cm; H: 4,3 cm; Sector: Halise Erensoylu,  
between trench H5-H6 8; Level: ?; Fabric:  
Same as No. 13. Pale brown surface.

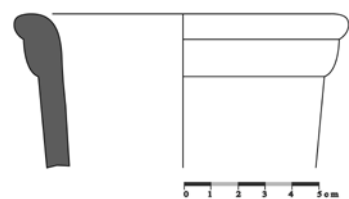
Date: fourth century BC



**23 (Fabric II)**

D: 11,4 cm; H: 5,5 cm; Sector: Halise Erensoylu; Trench:  
H-5; Level: 202-162 cm; Fabric: Same as No. 13. Light  
brown surface.

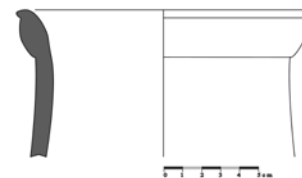
Date: fourth century BC



**24 (Fabric II)**

D: 14,8 cm; H: 7,8 cm; Sector: Maltepe tumulus; Level: Second level, from ashy soil; Fabric: Same as No. 13. Light creamy slip on surface.

Date: Last quarter of fourth century BC



**25 (Fabric II)**

D: 14,6 cm; H: 10,3 cm; Sector: Cemetery area, first trench; Fabric: Same as No. 13. Light creamy slip on surface.

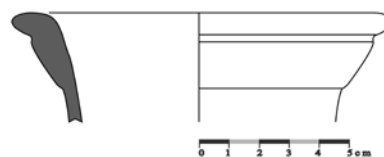
Date: fourth century BC



**26 (Fabric II)**

D: 12,2 cm; H: 3,4 cm; Sector: Mosaics area; Trench: H-5; Level: 300-178 cm; Fabric: Same as No. 13. Reddish yellow surface.

Date: Last quarter of fourth century BC



**27 (Fabric II)**

D: 13 cm; H: 6 cm; Sector: Mosaics area; Trench: H-5; Level: 205-178 cm; Fabric: Same as No. 13. Brown surface.

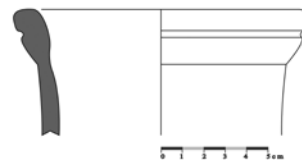
Date: Last quarter of fourth century BC



**28 (Fabric II)**

D: 13 cm; H: 5,7 cm; Sector: Maltepe tumulus; Trench: 5; Level: Second level, from ashy soil; Fabric: Same as No. 13. Pale brown surface.

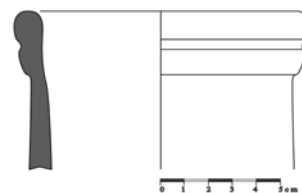
Date: Last quarter of fourth century BC



**29 (Fabric II)**

D: 11,4 cm; H: 6,7 cm; Sector: Maltepe tumulus; Trench: 5; Level: Second level, from ashy soil; Fabric: Same as No. 13. Creamy slip on surface.

Date: Last quarter of fourth century BC



**30 (Fabric II)**

D: 13,4 cm; H: 6 cm; Sector: Maltepe tumulus; Trench: 6; Level: First level, from brown soil; Fabric: Same as No. 13. Light brown surface.

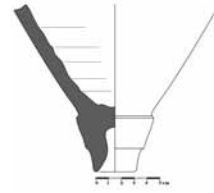
Date: Last quarter of fourth century BC



### 31 (Fabric II)

D: 3 cm; H: 12,5 cm; Sector: Halise Erensoylu; Trench: H-6; Level: 156-139 cm; Fabric: Same as No. 13. Cream slip on surface.

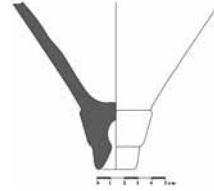
Date: fourth century BC



### 32 (Fabric II)

D: 2,8 cm; H: 12,1 cm; Sector: Halise Erensoylu; Trench: H-5; Level: 176-156 cm; Fabric: Same as No. 13. Light brown surface.

Date: fourth century BC



## BIBLIOGRAPHY

- Akurgal, E. 1993. *Eski Çağda Ege ve İzmir*. Net Yayıncılık, İzmir.
- Blonde, F., D. Mulliez and A. Muller 1991. "Le comblemet d'un puits punice à Thasos", *BCH* 115: 213-242.
- Doğer, E. 1982. *Klazomenai Kazısı Ticari Amphora Buluntuları*. Unpublished Graduate Thesis, Ege University Department of Classical Archaeology, İzmir.
- Doğer, E. 1986. "Premières remarques sur les Amphores de Clazomènes", *BCH Suppl.* XIII: 461-471.
- Doğer, E. 1990a. *Antik Çağda Amphoralar*. Sergi Yayınevi, İzmir.
- Doğer, E. 1990b. "Klazomenai'de Antik Kaynaklara Dayalı Tarımsal İhraç Ürünleri ve Ticari Amphora Üretimleri Üzerine Gözlemler", *Türk Tarih Kongresi X*: 701-710.
- Dupont, P. and E. Skarlatidou 2012. "Archaic Transport Amphoras from the First Necropolis of Clazomenian Abdera", M. Tiverios et al. (eds) *Archaic Pottery of the Northern Aegean and Its Periphery (700-480 BC)* (Proceeding of the Archaeological Meeting, Thessaloniki 19-22 May 2011): 253-264. Thessaloniki.
- Grace, W. 1979. *Amphoras and the Ancient Wine Trade*. The American School of Classical Studies at Athens, Princeton.
- Hasdağlı, İ. 2012. "The Assessment of the 4th Century B.C. Finds from Three Wells Uncovered at Clazomenae HBT (Hamdi Balaban Tarlası) Sector", *OLBA XX*: 119-164.
- Hürmüzlü, B. 2004. "Burial Grounds at Klazomenai: Geometric through Hellenistic Periods", A. Moustaka et al. (eds) *Klazomenai, Teos, and Abdera: Metropolis and Colony*: 77-95. University Studio Press, Thessaloniki.
- Okan, E. and C. Atila 2015. "Phokaia Maltepe Tümülüsü Dolgusundan Ele Geçen Mühürlü Amphora Kulpları", C. Atila and E. Okan (eds) *Prof. Dr. Ömer Özyiğit'e Armağanı/Essays in Honour of Prof. Dr. Ömer Özyiğit*: 315-328. Ege Yayınları, İstanbul.
- Okan, E., C. Atila and A. Akyol 2015. "The Production Of Chios-Style Amphorae At A Ceramic Workshop In Phocaea", *Mediterranean Archaeology and Archaeometry* 15/3: 259-276.
- Özbay, F. 2006. *Klazomenai'deki M.Ö. 4. Yüzyıl Yerleşimi*. Unpublished Doctorate Thesis, Ege University Department of Archaeology, İzmir.
- Özyiğit, Ö. 1992. "1990 Yılı Phokaia Kazı Çalışmaları", *Kazı Sonuçları Toplantısı* 13/II: 99-122.
- Özyiğit, Ö. 1995. "1993 Yılı Phokaia Kazı Çalışmaları", *Kazı Sonuçları Toplantısı* 16/II: 425-454.
- Özyiğit, Ö. 1996. "1994 Yılı Phokaia Kazı Çalışmaları", *Kazı Sonuçları Toplantısı* 17/III: 1-26.
- Özyiğit, Ö. 1997. "1995 Yılı Phokaia Kazı Çalışmaları", *Kazı Sonuçları Toplantısı* 18/II: 1-26.
- Selçuk, T. 1998. *1992-1995 Yılları Arasında Phokaia Kazılarında Bulunmuş Amphoralar*. Unpublished Doctorate Thesis, Dokuz Eylül University, İzmir.