



Image in rheumatology

Giant aneurysm of tibialis posterior artery presenting as calf mass

Derya Güçlü*, Elif Nisa Ünlü, Hayri Oğul

Düzce University, Radyoloji AD, Düzce 81010, Turkey

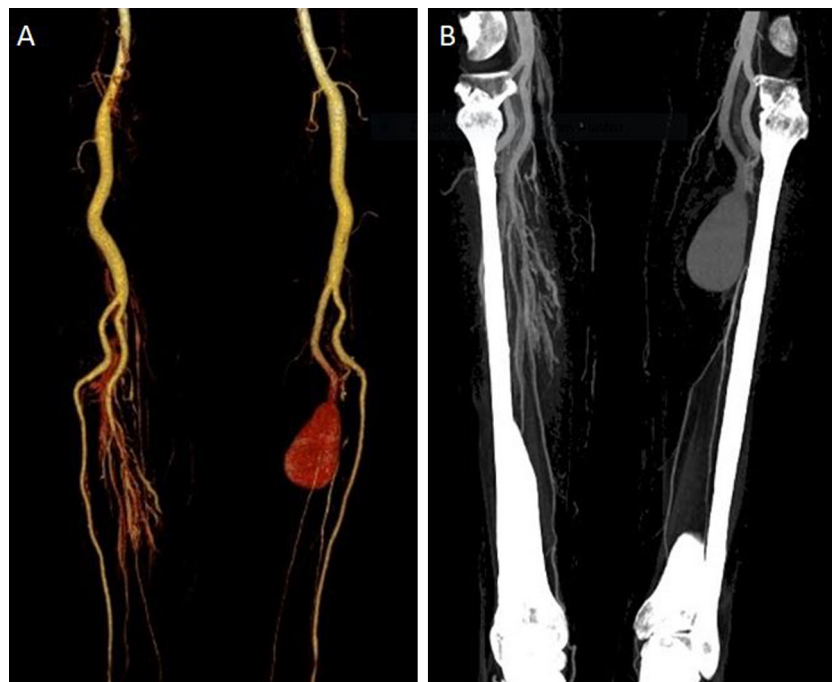


Fig. 1.

CT angiography of a 67-year-old man revealing a giant aneurysm originating from the tibialis posterior artery (Fig. 1). He had no previous history of trauma or surgery. Aneurysms of the posterior tibial artery were rarely reported in the literature. They occur most commonly secondary to trauma. Fungal infections and collagenopathies are other but less common causes [1]. In the differential diagnosis, neurinomas, tendon cysts and soft tissue tumours should come to mind [2]. Early diagnosis is very important for a successful surgical therapy and to avoid complications.

References

- [1] Barbano B, Gigante A, Zaccaria A, et al. True posterior tibial artery aneurysm in a young patient: surgical or endovascular treatment? *BMJ Case Rep* 2009;2009 [bcr04.2009.1812].
- [2] Sagar J, Button M. Posterior tibial artery aneurysm: a case report with review of literature. *BMC Surg* 2014;14:37.

* Corresponding author.
E-mail address: deryasr@hotmail.com (D. Güçlü).