

Assessment of genetic diversity and phylogenetic relationships of endangered endemic plant *Barbarea integrifolia* DC. (Brassicaceae) in Turkey

Ertuğrul FİLİZ^{1*}, Etem OSMA², Ali KANDEMİR², Hüseyin TOMBULOĞLU³,
Güzin TOMBULOĞLU^{3,4}, Seda BİRBİLENER⁵, Mehtap AYDIN³

¹Department of Crop and Animal Production, Çilimli Vocational School, Düzce University, Çilimli, Düzce, Turkey

²Department of Biology, Faculty of Arts and Sciences, Erzincan University, Erzincan, Turkey

³Department of Biology, Faculty of Science and Arts, Fatih University, Büyükkçekmece, İstanbul, Turkey

⁴Vocational School of Medical Sciences, Fatih University, Maltepe, İstanbul, Turkey

⁵Department of Biology, Faculty of Science and Arts, Marmara University, Göztepe, İstanbul, Turkey

Received: 14.03.2014

Accepted: 05.09.2014

Published Online: 17.11.2014

Printed: 28.11.2014

Abstract: *Barbarea integrifolia* DC. (Brassicaceae) is an endangered and endemic species located in Erzincan and Gümüşhane provinces of Turkey. In total, 27 individuals from 2 natural populations were assessed using the random amplified polymorphic DNA polymerase chain reaction (RAPD-PCR) method coupled with sequence analysis of the internal transcribed spacer (ITS1) rDNA region. Genetic accuracy of RAPD-PCR was tested with 25 RAPD primers, and it resulted in 115 clear and reproducible DNA fragments from 13 RAPD primers. Among these, 76 (66.1%) fragments were found to be polymorphic. According to the ITS1 analysis of *B. integrifolia* populations, the plants exhibited a relatively poor genetic diversity. In total, 60 ITS1 nucleotide sequences from the GenBank database with 2 newly identified ITS1 sequences from the Turkish populations were used to construct a maximum-likelihood tree. The lengths of ITS1 sequences of *B. integrifolia* were found to be 268 bp for population I and 271 bp for population II. ITS1 sequences of *B. integrifolia* species showed 97% sequence identity. Phylogenetic analysis revealed that *Barbarea* species were monophyletic and showed high bootstrap values. *B. integrifolia* had closer relationships with Cardamineae taxa, including *Cardamine*, *Rorippa*, and *Armoracia*. On the contrary, allied genus *Nasturtium* species were separated from Cardamineae taxa. The genetic information obtained from this study could be used for the development of conservation strategies not only for *B. integrifolia* but also for rare and endangered plant species.

Key words: *Barbarea integrifolia*, ITS1, Brassicaceae, genetic diversity, RAPD, endangered species

1. Introduction

Brassicaceae (Cruciferae) is an important plant family, including edible and economic plant species (vegetables, sources of industrial and cooking oils, and forages), and important flowering model organisms (*Arabidopsis* and *Brassica*) (Al-Shehbaz et al., 2006; Couvreur et al., 2010). The Brassicaceae or mustard family consists of 338 genera and 3709 species around the world (Al-Shehbaz et al., 2006). In Turkey, Brassicaceae is represented by 571 species with 65 subspecies, 24 varieties, and 660 taxa belonging to 91 genera (Al-Shehbaz et al., 2007). *Barbarea* is a natural genus belonging to the tribe Arabideae along with *Arabis*, *Cardamine*, *Cardaminopsis*, and *Rorippa* (Rich, 1987). *Barbarea* R.Br. is composed of nearly 20 species distributed in Europe and Asia (Al-Shehbaz, 1988). The highest diversity was observed in Turkey and the Balkan Peninsula, of which 11 of the 17 species were reported as endemic (Ball, 1993; Al-Shehbaz and Peng,

2000). In Turkey, 10 *Barbarea* species are distributed all over the country and 50% of those were referred to as endemic (Al-Shehbaz et al., 2007). The chromosome number (n) of *Brassica* is variable across species between 7 and 19. In *Barbarea* species, it was demonstrated that the chromosome number is 8 or 9 (Warwick and Al-Shehbaz, 2006).

B. integrifolia is a perennial herb that grows up to 40 cm. It has yellow flowers and its fruits are inflorescence condensed. It is distributed in northeastern Turkey, around Gümüşhane and Erzincan provinces (Davis, 1965). It was found in 2 natural populations: the Koçyatağı population (Erzincan, pop-1) and the Uzunkol population (Gümüşhane, pop-2). The Koçyatağı population was discovered in the last 10 years, whereas the Uzunkol population was discovered for the first time in this study. The Koçyatağı population contains about 150 individuals, whereas the Uzunkol population was evaluated as the bigger

* Correspondence: ertugrulfiliz@gmail.com

population with around 2000 individuals in Gümüşhane. The distance of these populations from each other is nearly 5 km. The individuals in the Koçyatağı population live near a lake and the stems are decumbent to ascending. The stems are also shorter than 30 cm. The specimens in Uzunkol live in the water but not near the lake. The stems are erect and longer than 35 cm. The other morphological characteristics generally are similar. The species has been categorized as endangered according to the International Union for Conservation of Nature categories and is listed in the Red Data Book of Turkish Plants (Ekim et al., 2000). *Barbarea* species have been used in various studies, including glucosinolate analysis (Agerbirk and Olsen, 2011), molecular systematics, phylogenetic analysis (Koch et al., 2001; Al-Shehbaz et al., 2006; Bailey et al., 2006; Beilstein et al., 2006), cytogenetic analysis (Warwick and Al-Shehbaz, 2006), and floristic studies (Al-Shehbaz and Peng, 2000; Al-Shehbaz et al., 2007).

Molecular markers have been used widely for genetic diversity analysis in many plant species (Agarwal et al., 2008). Random amplified polymorphic DNA (RAPD) is one of the polymerase chain reaction (PCR)-based marker systems, developed by Williams et al. (1990). It is simpler, of lower cost, and faster than other marker systems (Williams et al., 1990). However, RAPD exhibits some disadvantages such as difficulty in reproducibility and, being a dominant marker, it is not possible to differentiate heterozygous and homozygous loci (Kumar and Gurusubramanian, 2011).

In addition to RAPD-PCR analysis, a variety of internal transcribed spacer (ITS) regions of *B. integrifolia* plants were screened and compared with the known plant ITS1 sequences. The ITS1 region of the 18S–5.8S–26S nuclear ribosomal cistron is a popular sequence for phylogenetic analysis in plants. It is advantageous as it monitors the genetic diversity including biparental inheritance, universality, simplicity, intragenomic uniformity, and intergenomic variability (Alvarez and Wendel, 2003). ITS

sequences could also be encouraging in terms of gaining insights into polyploid ancestry, genome relationships, historical introgression, and other evolutionary questions (Bailey et al., 2002; Alvarez and Wendel, 2003). In the present study, *B. integrifolia* populations collected from 2 different locations in Turkey were used to analyze phylogenetic relationships and genetic variation by using ITS1 sequences and RAPD markers, respectively.

2. Materials and methods

2.1. Plant material

Two distinct populations of *B. integrifolia* plants were collected from Erzincan (Koçyatağı district) and Gümüşhane (Uzunkol district) provinces (Figures 1 and 2). In this study, a total of 27 mature plant samples, 13 from Koçyatağı and 14 from Uzunkol, were randomly collected. The plants were harvested in at least 10-m intervals to prevent collecting populations' own clones. Their fresh leaves were stored at -80°C until DNA extraction. The GPS coordinates were recorded in the Universal Transverse Mercator system: $37^{\circ} 525' 497''$ E, $442^{\circ} 64' 53''$ N, 2058 m for Uzunkol and $37^{\circ} 519' 035''$ E, $442^{\circ} 06' 26''$ N, 2664 m for Koçyatağı.

2.2. DNA isolation and RAPD-PCR analysis

Total genomic DNA was isolated from 0.5 g of powdered fresh leaves by using the Wizard Genomic DNA Purification Kit (Promega, Madison, WI, USA) according to the manufacturer's instructions. The DNA concentration of each sample was determined using BioSpec-nano (Shimadzu, Kyoto, Japan) and then the elutions were diluted with sterile distilled water to a final concentration of $20\text{ ng }\mu\text{L}^{-1}$.

A total of 25 RAPD primers (Operon Technologies Inc., Alameda, CA, USA) were tested for RAPD-PCR analysis. Among these primers, 13 produced clear, polymorphic, and reproducible bands that were used for further analysis (Table 1). Each analysis was repeated once to observe the

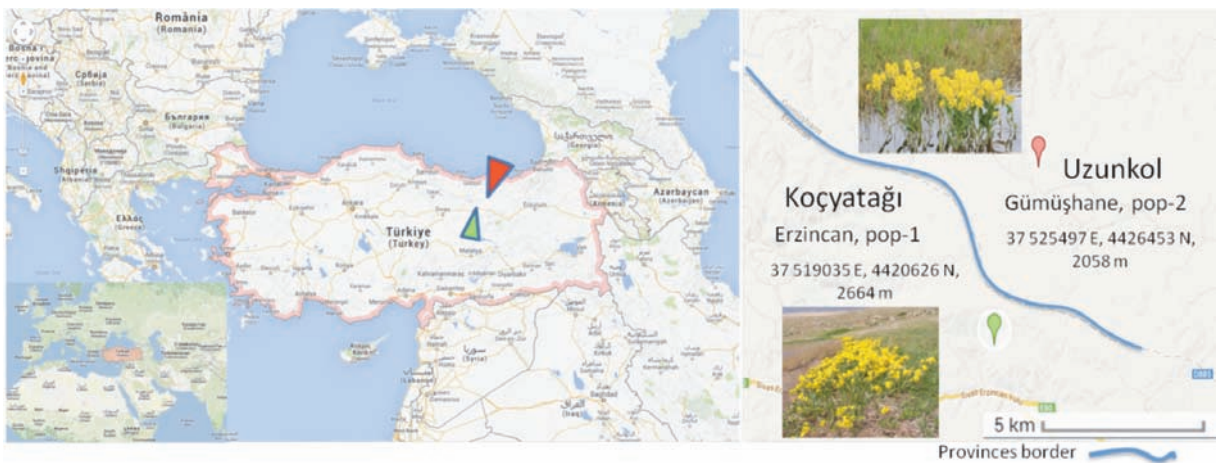


Figure 1. Geographic location of the 2 populations of *B. integrifolia* (Koçyatağı and Uzunkol) in Turkey (courtesy of Google Maps).

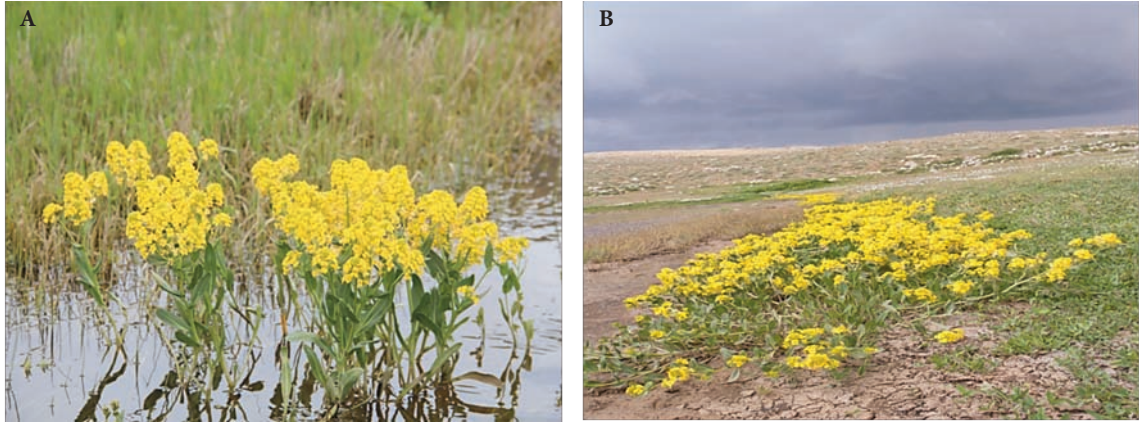


Figure 2. Specimens of *B. integrifolia* from the Uzunkol population (A) and Koçyatağı population (B).

Table 1. Details of the 25 RAPD markers used in this study.

No.	Primer code	Sequence (5'-3')	Annealing temperature (°C)	Total number of bands	Number of polymorphic bands	Polymorphic bands (%)
1	OPU-02	CTGAGGTCTC	36 °C	9	5	55.5
2	OPI-13	CTGGGGCTGA	36 °C	12	6	50
3	OPI-15	TCATCCGAGG	36 °C	9	8	88.9
4	OPB-01	GTTTCGCTCC	36 °C	8	6	75
5	OPB-04	GGACTGGAGT	36 °C	7	7	100
6	OPB-05	TGCGCCCTTC	36 °C	14	5	35.7
7	OPB-06	TGCTCTGCCC	36 °C	10	6	60
8	OPB-07	GGTGACGCAG	36 °C	9	7	77.8
9	OPB-08	GTCACACGG	36 °C	10	6	60
10	OPB-09	TGGGGGACTC	36 °C	9	5	55.5
11	OPA-07	GAAACGGGTG	36 °C	7	6	85.7
12	OPA-12	TCGGCGATAG	36 °C	5	4	80
13	OPA-04	AATCGGGCTG	36 °C	6	5	83.3
14	OPS-18	CTGGCGAACT	36 °C	-	-	-
15	OPS-07	TCCGATGCTG	36 °C	-	-	-
16	OPU-16	CTGCGCTGGA	36 °C	-	-	-
17	OPI-16	TCTCCGCCCT	36 °C	-	-	-
18	OPI-17	GGTGGTGATG	36 °C	-	-	-
19	OPU-06	ACCTTTGCGG	36 °C	-	-	-
20	OPU-11	AGACCCAGAG	36 °C	-	-	-
21	OPI-19	AATGCGGGAG	36 °C	-	-	-
22	OPB-02	TGATCCCTGG	36 °C	-	-	-
23	OPA-09	GGGTAACGCC	36 °C	-	-	-
24	OPA-16	AGCCAGCGAA	36 °C	-	-	-
25	OPA-20	GTTGCGATCC	36 °C	-	-	-
Total				115	76	

reproducibility of the data. RAPD-PCR reactions were performed in a volume of 25 μL containing 2.5 mM MgCl_2 , 0.2 mM dNTPs, 0.5 μM reverse and forward primers, 1 U of Taq DNA polymerase (Thermo Sci, Waltham, MA, USA), 10X Taq DNA polymerase buffer at 2.5 μL , and 25 ng of template DNA. Amplification was performed using a DNA Thermal Cycler (TC-3000, Techne, Burlington, NJ, USA) with the following reaction conditions: initial denaturation for 5 min at 94 °C, followed by denaturation for 1 min at 94 °C, annealing for 1 min at 36 °C, and extension for 1 min at 72 °C for 35 cycles with a final extension for 7 min at 72 °C. Amplification products were separated on 1.7% agarose gel with ethidium bromide, run in 0.5X TBE buffer, and digitally photographed under UV light. A 100-bp DNA ladder (Thermo Sci) was used as the marker.

2.3. ITS1 amplification and DNA sequencing

Two ITS primers (ITS1: 5'-TCCGTAGGTGAACCTGCGG-3' and ITS2: 5'-GCTGCGTTCTTCATCGATGC-3') were used to amplify the ITS1 regions of candidate plant rDNAs (White et al., 1990). Two individuals (B1 and B20 for the Uzunkol and Koçyatağı populations, respectively) were selected for sequencing. PCR reaction mixtures (25 μL in total volume) were prepared, including 2.0 mM MgCl_2 , dNTPs (200 μM each), 0.2 μM primers, 50 ng of template DNA, and 0.5 U of Taq DNA polymerase (Thermo Sci). Amplification was performed using the Techne TC-3000 with an initial denaturation step at 94 °C for 3 min, followed by 30 cycles of 1 min at 94 °C, 45 s at 58 °C, and 1 min at 72 °C and a final cycle of 5 min at 72 °C. Amplification products were analyzed on 1.5% agarose gel in 1X TBE buffer, stained with SafeView DNA stain (NBS Scientific, St. Albans, UK) and visualized with the Quantum ST5 imaging system. The PCR products were purified using a GeneJET Gel Extraction Kit (Thermo Sci) and sequenced by İntek Sequencing Service (İstanbul, Turkey).

2.4. RAPD data analysis

Amplified fragments were scored according to the presence (1) or absence (0) of the homologous bands. For statistical analysis, the band patterns were translated into a binary data matrix. The data were analyzed using PopGene version 1.31 (Yeh et al., 1999) and MVSP 3.2 (MultiVariate Statistical Package). Accordingly, the percentage of polymorphic loci (P), mean number of observed (N_a) and effective (N_e) alleles per locus (Kimura and Crow, 1964), Nei's gene diversity (h) (Nei, 1973), Shannon's information index (I), total genetic variation (H_T), within-population genetic variation (H_S), Nei's genetic differentiation coefficient (G_{ST}), and gene flow (Nm) were calculated. Gene flow was estimated using the mean value of pairwise genetic distances (Φ_{st}) with the formula of $N_e m = (1/4) [(1/\Phi_{st}) - 1]$, where N_e is the effective population size and m is migration rate

(Wright, 1951). A principal component analysis (PCA) test that provides a graphical representation of the RAPD relationships between individuals was demonstrated with the variance-covariance matrix calculated from marker data using MVSP 3.2. A dendrogram was generated based on Jaccard's similarity coefficients (Jaccard, 1908) using the unweighted pair group method with calculating the arithmetic average (UPGMA) by MVSP 3.2.

2.5. ITS1 data analysis

A total of 60 ITS1 sequences were retrieved from GenBank (<http://www.ncbi.nlm.nih.gov/genbank/>) (Table 2), including 6 different *Barbarea* species and 54 related genera in the family Brassicaceae. The outgroup taxon was chosen as *Psephellus taochius* (Compositae), belonging to the same family as *B. integrifolia*. For the phylogenetic analysis, all sequences were aligned with ClustalW in BioEdit 7.1.3.0 (Hall, 1999; Larkin et al., 2007) using the multiple alignment default parameters. Phylogenetic trees were generated with the maximum-likelihood method using MEGA 5.1. The evolutionary distances were computed using the maximum composite likelihood method. The datasets were obtained with the complete deletion option and the Kimura 2-parameter nucleotide substitution model. Bootstrap tests with 1000 replicates were also applied using MEGA 5.1. The sequence identity matrix, G+C content (%), Tajima's test of neutrality (Tajima, 1989), and conserved regions of *Barbarea* ITS1 sequences were calculated using BioEdit 7.1.3.0 (Hall, 1999; Larkin et al., 2007).

3. Results and discussion

3.1. RAPD analysis

We used a total of 27 genotypes from 2 natural Turkish populations of *B. integrifolia*. Thirteen of 25 RAPD primers produced polymorphic and reproducible products (Table 1). The banding patterns and polymorphism of primer OPA-07 are shown in Figure 3.

RAPD-PCR analysis showed that 13 random primers generated 115 distinct bands and 76 of them were polymorphic (66.1%) (Table 1). The total number of amplified DNA bands for each individual ranged from 6 (primer OPA-04) to 14 (primer OPB-05) with the average number of 8.8 bands per primer. The highest number of polymorphic bands was obtained with primer OPI-15, while the minimum number was with primer OPA-12. On average, 5.85 polymorphic bands were observed. The highest level of polymorphism (88.9%) was found with primer OPI-15, while the lowest polymorphism (50%) was found with primer OPI-13. In general, endemic plant species show low genetic diversity (Ellstrand and Elam, 1993). *B. integrifolia* is an endemic and endangered plant species belonging to the family Brassicaceae in tribe Arabideae. The present study displays a high

Table 2. Accession number of *B. integrifolia* and its related species used in the phylogenetic analysis of ITS1 sequences. Asterisks indicate the new *Barbarea integrifolia* ITS1 sequences submitted to the NCBI GenBank.

Species	GenBank accession no.	Species	GenBank accession no.
<i>Barbarea integrifolia</i>	KF771880*, KF771881*	<i>Crucihimalaya rupicola</i>	FM164538
<i>Barbarea grayi</i>	AJ628263	<i>Desideria prolifera</i>	AJ628333
<i>Barbarea intermedia</i>	AJ628269	<i>Diploaxis virgata</i>	Q983985
<i>Barbarea stricta</i>	AJ628265	<i>Dontostemon tibeticus</i>	AY558942
<i>Barbarea verna</i>	AJ628267	<i>Draba kusnetzowii</i>	FM957509
<i>Barbarea vulgaris</i> subsp. <i>rivularis</i>	AJ628271	<i>Dryopetalon paysonii</i>	EU620270
<i>Barbarea australis</i>	AJ628261	<i>Erysimum mongolicum</i>	FM164520
<i>Armoracia rusticana</i>	AF078031	<i>Galitzkya spathulata</i>	FM164534
<i>Cardamine bipinnata</i>	FJ464466	<i>Halimolobos whitedii</i>	AJ628295
<i>Cardamine californica</i>	FJ464467	<i>Hesperidanthus barnebyi</i>	EU620271
<i>Cardamine castellana</i>	AY245994	<i>Hormathophylla purpurea</i>	FM164546
<i>Cardamine nymanii</i>	AF265178	<i>Ionopsidium prolongoi</i>	AJ628303
<i>Cardamine wiedmanniana</i>	Y246000	<i>Matthiola lunata</i>	AJ628341
<i>Rorippa sylvestris</i>	AF078023	<i>Moriera spinosa</i>	EU938536
<i>Rorippa palustris</i>	AF078021	<i>Muricaria prostrata</i>	AF039992
<i>Rorippa amphibia</i>	AF078025	<i>Noccaea caerulescens</i>	FM164568
<i>Nasturtium officinale</i>	AF078027	<i>Noccidium hastulatum</i>	AF336164
<i>Nasturtium microphyllum</i>	AF078029	<i>Parrya lancifolia</i>	FM164582
<i>Aethionema carneum</i>	EU938532	<i>Physorhynchus chamaerapistrum</i>	AF039990
<i>Alyssum argenteum</i>	HE817941	<i>Pseudoclausia turkestanica</i>	FM164584
<i>Aphragmus involucratus</i>	FM164512	<i>Ptilotrichum canescens</i>	FM164586
<i>Arabis kamelinii</i>	FM164596	<i>Rapistrum rugosum</i>	AF039991
<i>Biscutella laevigata</i>	AJ628323	<i>Rhammatophyllum fruticosum</i>	FM164594
<i>Borodinia macrophylla</i>	FM164528	<i>Sinapidendron angustifolium</i>	AF039993
<i>Caulanthus crassicaulis</i>	EU620267	<i>Smelowskia flavissima</i>	FM164598
<i>Chlorocrambe hastata</i>	EU620269	<i>Stanleya tomentosa</i>	EU620273
<i>Chrysochamela velutina</i>	AJ628281	<i>Sterigmostemum fuhaiense</i>	FM164612
<i>Clausia aprica</i>	AY558938	<i>Stevenia sergievskajae</i>	FM164608
<i>Clausia trichosepala</i>	AJ628317	<i>Thelypodopsis ambigua</i>	EU620278
<i>Cochlearia danica</i>	AJ628283	<i>Vania campylophylla</i>	AF336168
<i>Crambe abyssinica</i>	AF039958		

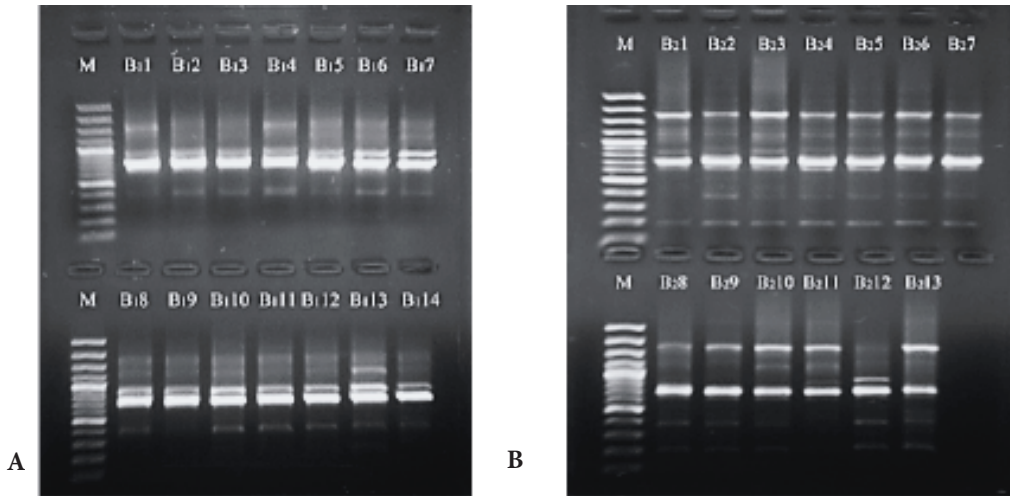


Figure 3. Agarose gel indicating RAPD amplification bands profile with OPA-07 primer. M: 100-bp standard marker. **A)** Uzunkol population (14 individuals), **B)** Koçyatağı population (13 individuals).

polymorphic band profile (PPB, 94.60%) among the 2 natural populations of *B. integrifolia*. Our finding (PPB: 94.60%) was higher than the PPB of other endemic plants such as *Coelonema draboides* (86.6%; Chen et al., 2005), *Changium smyrnioides* (69%; Fu et al., 2003), and *B. sinica* var. *parvifolia* (79.9%; Huang et al., 2008). The extinction and recolonization dynamics may cause either increased or decreased genetic variations among populations regulated by evolutionary history, such as founding events and degrees of migration (Pannell and Charlesworth, 2000). *B. integrifolia* showed high genetic polymorphism; it can be proposed that the endangered and endemic species *B. integrifolia* had extinction and recolonization events during its course of life with fragmented habitats and small population size.

Genetic parameters (percentage of polymorphic loci (P%), observed number of alleles (Na), effective number of alleles (Ne), Nei's gene diversity (h), and Shannon's information index (I)) for intra- and interpopulation variability are shown in Table 3. In particular, P% values (75.68% for pop-1 and 59.46% for pop-2) were found to be different; it can be suggested that life history may affect genomic variation, including extinction and recolonization (Pannell and Charlesworth, 2000). Some ecological barriers preventing gene flow may also prove the divergence of genetic structure in populations.

The overall percentage of polymorphic loci, observed number of alleles, effective number of alleles, Nei's gene diversity, and Shannon's information index were calculated as 94.6%, 2 ± 0.0 , 1.59 ± 0.32 , 0.34 ± 0.15 , and 0.51 ± 0.18 , respectively. Total genetic variation (H_T), within-population genetic variation (H_S), genetic differentiation coefficient (G_{ST}), and gene flow (N_m) were observed as 0.34 ± 0.2 , 0.22 ± 0.20 , 0.35, and 0.93, respectively. The genetic distance of pop-1 and pop-2 was found as 0.37. Total genetic variation (H_T) of endemic plant species was reported in many studies, including *Primula apennina* (H_T 0.24; Crema et al., 2009), *Kirengeshoma palmata* (H_T 0.26; Zhang et al., 2006), and *C. nivea* (H_T 0.29; Sözen and Özyaydın, 2009). Shannon's information index (I) of *B. integrifolia* was found as 0.51, which was higher than in *B. sinica* var. *parvifolia* (0.43; Huang et al. 2008), *C. wiedemanniana* (0.3; Sozen and Özyaydın, 2010), and *Centaurea nivea* (0.45; Sözen and Özyaydın, 2009). Hence, by comparing recent publications, the genetic diversity of *B. integrifolia* was found to be high.

It was observed that *B. integrifolia* plants live near ponds and snowy slopes in high mountains. In spite of the stems being erect in the Uzunkol population, the members of the Koçyatağı population had decumbent structures with ascending stems. The Uzunkol area is in a valley and the altitude (2058 m) is lower than that at Koçyatağı (2664 m).

Table 3. Genetic structure of *B. integrifolia* populations based on RAPD data (mean \pm standard error).

Populations	Sample size	Percentage of polymorphic loci (P%)	Observed number of alleles (Na)	Effective number of alleles (Ne)	Nei's gene diversity (h)	Shannon's information index (I)
Koçyatağı (pop-1)	14	75.68	1.76 ± 0.43	1.42 ± 0.41	0.24 ± 0.21	0.36 ± 0.28
Uzunkol (pop-2)	13	59.46	1.59 ± 0.50	1.36 ± 0.40	0.21 ± 0.21	0.31 ± 0.30

On the other hand, the wind constantly blows in Koçyatağı. It is thought that the genetic variation in plant populations is shaped by space and time (Loveless and Hamrick, 1984). The levels of genetic diversity and differentiation were shaped by factors like population history and habitat type (Shikano et al., 2010). A population may accumulate more genetic variations to resist the various ecological conditions in its habitat. In particular, individuals in the Uzunkol population live in a lake ecosystem of high mountains and their stems are longer than those of other relatives in the Koçyatağı population. Hence, this habitat type can affect the plant structure. It can also be said that the gene flows among the genotypes could have been affected due to winds in the lake ecosystem.

In addition, phylogenetic analysis and PCA revealed that individuals of different populations were not clustered together. It can be suggested that individuals of the *B. integrifolia* populations were differentiated from each other depending on evolutionary forces, including habitat fragmentation, gene flow, mutation, selection, ecological isolation, and genetic drift events during the shaping of the populations' genetic structure.

Genetic diversity is affected by different breeding systems and seed dispersal mechanisms (Hamrick and Godt, 1996). The genetic structures of the *B. integrifolia* populations could have contributions from these factors that we have no information about. The G_{ST} (coefficient of genetic differentiation between populations) data indicate

the level of genetic differentiation, which is not altered by the reproductive systems and evolutionary forces, including migration, selection, mating system, life form, and mutation (Slatkin, 1987; Trindade et al., 2012). Nybom and Bartish (2000) reported that compiled mean G_{ST} values were 0.59, 0.19, and 0.23 for selfing, mixed mating, and outcrossing of plant species, respectively. Compared to these values, *B. integrifolia* ($G_{ST} = 0.35$) was found to be closer to the outcrossing breeding systems. Based on our observations, it is thought that *B. integrifolia* has both seed and vegetative reproduction.

Genetic drift is one of the most important factors causing reduction in genetic variation while increasing the differentiation between populations (Ellstrand and Elam, 1993). Gene flow is commonly accepted to be able to homogenize a population's genetic structure (Slatkin, 1987). A migration rate of 0.5 was accepted as sufficient to cope with random drift (Ellstrand and Elam, 1993). In this study, total genetic variation ($H_T = 0.34$) was found higher at the species level than within-population genetic variations ($H_S = 0.22$). Furthermore, gene flow (N_m) was found to be 0.93 and is not restricted. This result may be related to gene flow that can cause decreasing within-population genetic variations of *B. integrifolia* with ample pollen movements by wind, water, and insects.

Similarity analysis was performed using the UPGMA method based on Jaccard similarity coefficients (Figure 4). In the tree, 2 main groups were observed. Main group 1

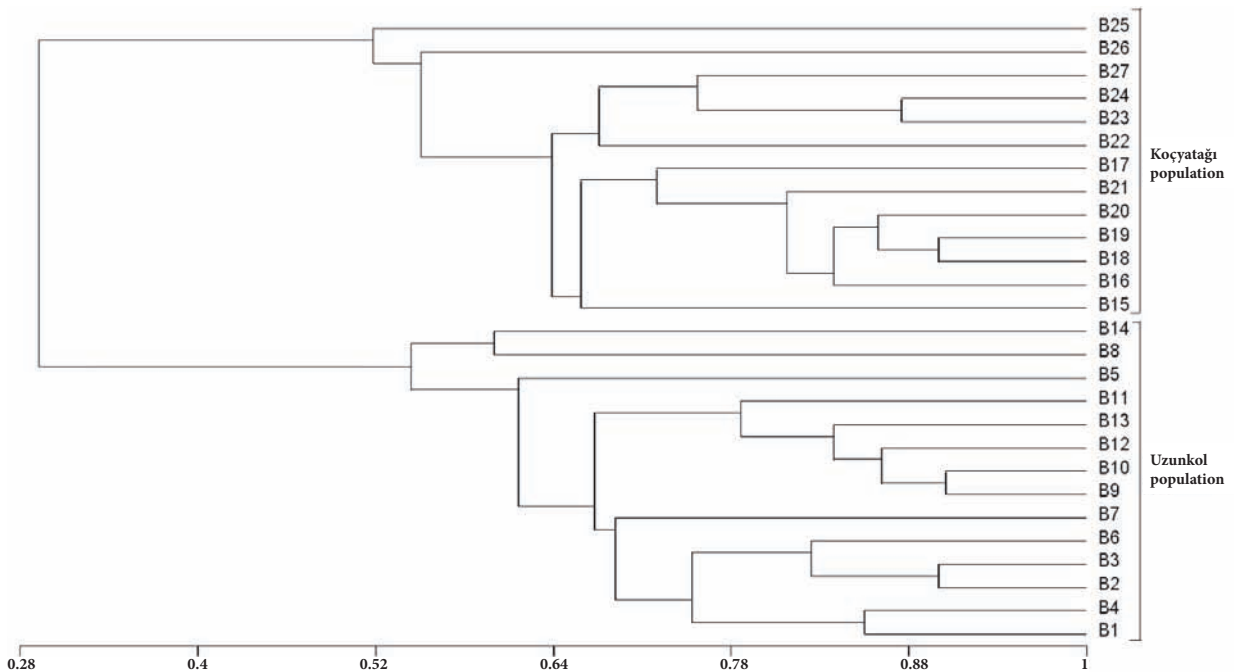


Figure 4. Dendrogram based on unweighted pair-group method with arithmetic average (UPGMA) among 27 individuals of *B. integrifolia* by using RAPDs.

was composed of pop-2 individuals (coded as B15, B16, B17, B18, B19, B20, B21, B22, B23, B24, B25, B26, and B27), whereas main group 2 had only pop-1 individuals (coded as B1, B2, B3, B4, B5, B6, B7, B8, B9, B10, B11, B12, B13, and B14). It was observed that individuals of each population were grouped together and were not joined in the tree. This tree topology can be affected by genetic structure of populations, which may be related to genomic forces such as mutations, insertions, deletions, etc.

Similar to the phylogenetic tree, PCA showed that individuals of populations 1 and 2 were dispersed from each other (Figure 5). Particularly, the B1 and B14 genotypes were separated from the other pop-1 individuals, whereas the B16, B17, B25, and B26 genotypes were isolated from others in pop-2.

3.2. Implications for conservation

Knowledge about the level of genetic diversity and the preservation of population sizes are essential for the development of conservation strategies of threatened and endangered species (Hamrick and Godt, 1989). Before deciding on conservation activities for a taxon, basic information about its habitat, distribution, morphology, physiology, reproductive mechanism, and human interactions should be collected (Primack, 2010). In this paper, the focus was placed on the genetic diversity of the *Barbarea* species by collecting some data regarding its habitat, morphology, and impact from humans. According to our observations, mowing, overgrazing, and use of the water for other activities (this species grows in stagnant water) by local people are the main threats for this species. Habitat fragmentation may also be another factor threatening the species. By considering the habitat of *B. integrifolia*, all populations should be conserved

for in situ conservation against human disturbance. In addition, water around the 2 natural populations should be protected against local people's consumption. Seeds of *B. integrifolia* should also be preserved in seed banks for ex situ conservation.

3.3. Nuclear ITS1 sequence data of *B. integrifolia*

For the genetic analysis, ITS1 regions of Turkish *Barbarea* populations (pop-1 and pop-2) were amplified and sequenced. The lengths of ITS1 sequences of *B. integrifolia* were 268 and 271 bp for pop-1 and pop-II, respectively. The sequences were submitted to the NCBI GenBank database and ID codes were received for the *Barbarea* species: pop-1, KF771880, and pop-2, KF771881.

ITS sequences obtained from the NCBI database varied between 200 and 270 bp in *Barbarea* species, including *Barbarea grayi*, *Barbarea intermedia*, *Barbarea stricta*, *Barbarea verna*, *Barbarea vulgaris* subsp. *rivularis*, and *Barbarea australis*. In *Cardamine* and allied genera, the length of the ITS1 ranged from 254 to 277 bp (Franzke et al., 1998). ITS1 lengths of *B. integrifolia* were similar to the other *Barbarea* and related species. The alignment of ITS1 regions also showed that there were many identical and similar regions. G+C contents (%) of ITS1-I and ITS1-II were determined as 51.87% for KF771880 (pop-1) and 51.66% for KF771881 (pop-2) in *B. integrifolia*. In other *Barbarea* species, G+C contents ranged from 51.66% to 52.59% (average: 52.12%) for ITS1 regions. In *Brassica juncea*, G+C contents were determined as 50.6% in ITS1 regions (Qi et al., 2007). These results are consistent with our findings.

The sequence identity matrix data revealed that *B. integrifolia* ITS1 sequences showed 97% identity with other species (Table 4). *B. integrifolia* shared the highest identity ratio with *B. australis*, *B. stricta*, and *B. verna*

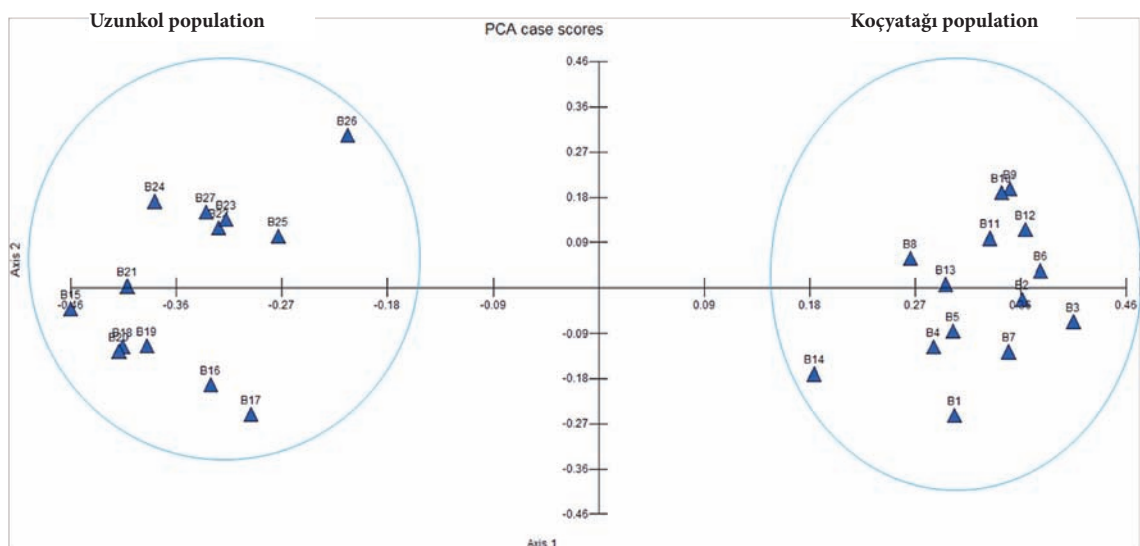


Figure 5. Principal component analysis of RAPD data among 27 individuals of *B. integrifolia*.

Table 4. Sequence identity matrix of ITS1 sequences in *Barbarea* species using BioEdit 7.1.3. Bold-written species represent the new ITS1 sequences identified in this study.

	1	2	3	4	5	6	7	8
1- KF771880 <i>Barbarea integrifolia</i>	ID	0.970	0.948	0.738	0.944	0.948	0.948	0.933
2- KF771881 <i>Barbarea integrifolia</i>	0.970	ID	0.948	0.730	0.944	0.948	0.948	0.933
3- AJ628261 <i>Barbarea australis</i>	0.948	0.948	ID	0.740	0.996	0.996	0.996	0.985
4- AJ628263 <i>Barbarea grayi</i>	0.729	0.738	0.730	ID	0.737	0.737	0.740	0.740
5- AJ628269 <i>Barbarea intermedia</i>	0.944	0.944	0.996	0.737	ID	0.992	0.992	0.981
6- AJ628265 <i>Barbarea stricta</i>	0.948	0.948	0.996	0.740	0.992	ID	0.992	0.981
7- AJ628267 <i>Barbarea verna</i>	0.948	0.948	0.996	0.740	0.992	0.992	ID	0.981
8- AJ628271 <i>Barbarea vulgaris</i>	0.933	0.933	0.985	0.729	0.981	0.981	0.981	ID

(94.8%), whereas the lowest identity was found between *B. integrifolia* and *B. grayi* (73%). According to Tajima's test of neutrality, nucleotide diversity (pairwise differences: π) and number of segregating sites (polymorphic site: S) were 0.0093 and 6, respectively. There was a total of 200 positions in the final dataset. This nucleotide diversity showed a low level of genetic diversity in ITS1 sequences of *B. integrifolia*. In *Barbarea* species, we found 3 conserved regions between 83 and 202, 206 and 222, and 246 and 263, including CTCTGCCGAATCCGTGGTTTCGTGAACAACCTTACGGGAGCTCT-CTCTCTGTTTGGGTTGTGCGCGTAGCTTCCGGATATCACAAAACCACGGCAGCAAAA GTGTCAAGGAACATGCA (120 bp), TATGAACAGC AAGCCTT (17 bp), and GTGCGTTTGGTGAGCTGC (18 bp), respectively. It can be suggested that the nuclear ITS1 region has been highly conserved in *Barbarea* species.

3.4. Phylogenetic relationships of *B. integrifolia* inferred from ITS1 sequences

Phylogenetic analysis was used to understand the closest relatives and phylogenetic relationships of *B. integrifolia*. For this purpose, we analyzed the phylogenetic relationship of *B. integrifolia* and 6 other different *Barbarea* species (Figure 6). It was observed that the highest bootstrap value was obtained from the *B. integrifolia* clade (88%), while the others were lower than 52%. *B. vulgaris* subsp. *rivularis* was especially not supported well in the *Barbarea* cluster. Most of the *Barbarea* species are distributed mainly in southern Europe and southwestern Asia (Al-Shehbaz, 1998). It can be stated that biogeographic distribution patterns may affect phylogenetic tree topology.

The phylogenetic analysis of *B. integrifolia* in the tribe Cardamineae revealed that *B. integrifolia* individuals

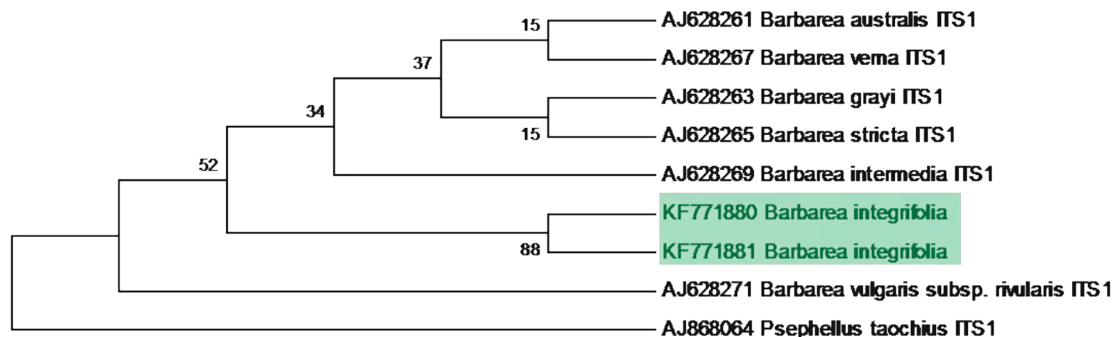


Figure 6. Phylogenetic analysis of *B. integrifolia* in the genus *Barbarea* using ITS1 sequences with the maximum-likelihood method. The sequences obtained from this study were submitted to GenBank and new accession codes were given for ITS1-I and ITS1-II as KF771880 and KF771881, respectively. A phylogenetic tree was generated with MEGA 5.1 and *Psephellus taochius* was used as the outgroup.

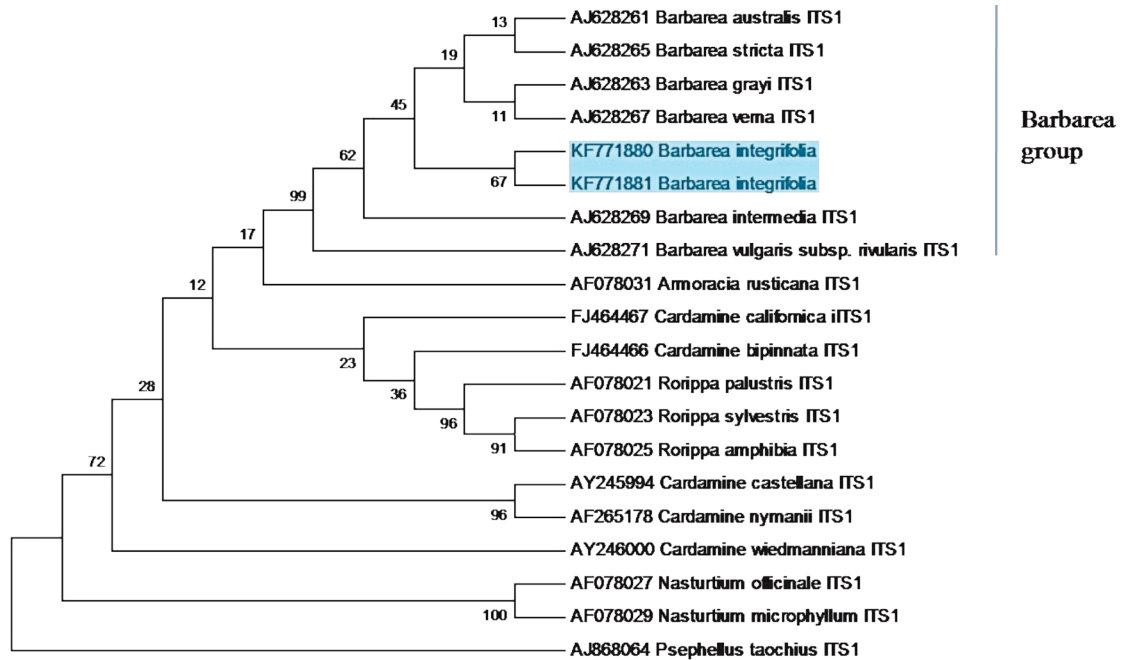


Figure 7. Phylogenetic relationships of *B. integrifolia* in Cardamineae in the family Brassicaceae using ITS1 sequences with the maximum-likelihood method. A phylogenetic tree was generated with MEGA 5.1 and *Psephellus taochius* was used as the outgroup.

were grouped with other *Barbarea* species, with a high bootstrap value (99%) (Figure 7). It was observed that *Barbarea* species clustered with *Cardamine*, *Armoracia*, and *Rorippa* species. Similar results were found in previous Brassicaceae phylogenetic studies, including *Chs* (*chalcone synthase*) sequences (Zhao et al., 2010), the *phytochrome A* (*PHYA*) gene and chloroplast gene *ndhF* (Beilstein et al., 2008), and *matK* sequences (Liu et al., 2012).

The phylogenetic analysis of *B. integrifolia* in the family Brassicaceae showed that *B. integrifolia* individuals were monophyletic and clustered with the other *Barbarea* species with a high bootstrap value (94%) (Figure 8). The *Barbarea* clade was grouped with *Cardamine*, *Rorippa*, and *Armoracia* species in Cardamineae. Previous ITS sequences revealed that *Cardamine amara*, *Nasturtium officinale*, *Barbarea vulgaris*, *Armoracia rusticana*, and *Rorippa amphibia* were clustered together in Cardamineae (Bailey et al., 2006), and our findings were in agreement with these results. Interestingly, *Nasturtium officinale* and *Nasturtium microphyllum*, taxa related to *B. integrifolia* in Cardamineae, were separated from the Cardamineae cluster in Brassicaceae (Figure 4). In some studies, *Nasturtium* is accepted as a distinct genus or section from *Cardaminum* within *Rorippa* (Al-Shehbaz, 1998; Al-Shehbaz and Price, 1998). According to ITS, trnT/L spacer, and trnL intron sequences, *Cardamine* taxa were separated based on biogeographic distributions (northern/southern hemisphere). *Nasturtium officinale* and *Nasturtium*

microphyllum were grouped together. In addition, *Rorippa* taxa and *Armoracia rusticana* were joined together in a phylogenetic tree (Franzke, 1998). In our study, *Nasturtium* taxa were not clustered with *B. integrifolia* and the other *Barbarea* taxa. Our findings proved the previous hypothesis that *Nasturtium* is a distinct genus or section from *Cardaminum* (Al-Shehbaz, 1998; Al-Shehbaz and Price, 1998).

The phylogenetic analysis of *B. integrifolia* in Cardamineae (Brassicaceae) revealed that the genus *Barbarea* was monophyletic and well supported. *B. integrifolia* showed closer relationship with the *Cardamine*, *Rorippa*, and *Armoracia* taxa and our results corroborated the previous taxonomic data. In conclusion, the first genetic diversity analysis of *B. integrifolia* including 2 natural Turkish populations was reported in this study. Our results will contribute to the understanding of the phylogenetic relationships among *Barbarea* taxa and related genera in the family Brassicaceae by using ITS1 sequences. Our findings could also support the conservation strategies for endangered plant *B. integrifolia* with in situ and ex situ activities, including preventing human disturbances on plants and protecting habitat and seeds.

Acknowledgment

We would like to thank Miss Berçem Yeman for proofreading this manuscript.

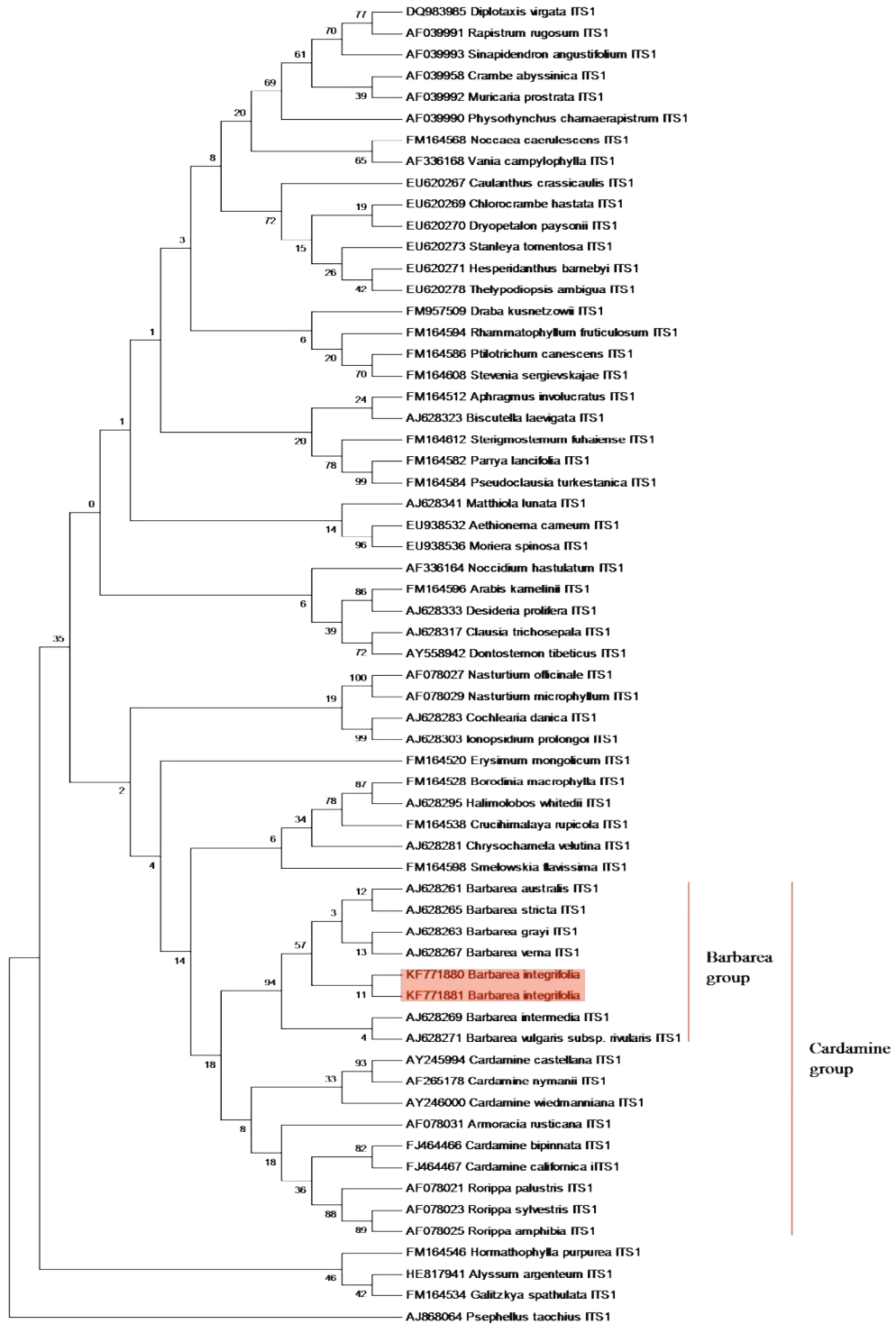


Figure 8. Phylogenetic relationships of *B. integrifolia* in the family Brassicaceae using ITS1 sequences with the maximum-likelihood method. A phylogenetic tree was generated with MEGA 5.1 and *Psephellus taochius* was used as the outgroup.

References

- Agarwal M, Shrivastava N, Padh H (2008). Advances in molecular marker techniques and their applications in plant sciences. *Plant Cell Rep* 27: 617–631.
- Agerbirk N, Olsen CE (2011). Isoferuloyl derivatives of five seed glucosinolates in the crucifer genus *Barbarea*. *Phytochemistry* 72: 610–623.
- Al-Shehbaz IA (1988). The genera of Arabideae (Cruciferae: Brassicaceae) in the southeastern United States. *J Arnold Arbor* 69: 85–166.
- Al-Shehbaz IA, Beilstein MA, Kellogg EA (2006). Systematics and phylogeny of the Brassicaceae (Cruciferae): an overview. *Pl Syst Evol* 259: 89–120.
- Al-Shehbaz IA, Mutlu B, Dönmez AA (2007). The Brassicaceae (Cruciferae) of Turkey, updated. *Turk J Bot* 31: 327–336.
- Al-Shehbaz IA, Peng CI (2000). The genus *Barbarea* (Brassicaceae) in Taiwan. *Bott Bull Acad Sin* 41: 237–242.
- Al-Shehbaz IA, Price RA (1998). Delimitation of the genus *Nasturtium* (Brassicaceae). *Novon* 8: 124–126.
- Alvarez I, Wendel JF (2003). Ribosomal ITS sequences and plant phylogenetic inference. *Mol Phylogenet Evol* 29: 417–434.
- Bailey CD, Koch MA, Mayer M, Mummenhoff K, O’Kane SL, Warwick SI, Windham MD, Al-Shehbaz IA (2006). Toward a global phylogeny of the Brassicaceae. *Mol Biol Evol* 23: 2142–2160.
- Bailey CD, Price RA, Doyle JJ (2002). Systematics of the halimolobine Brassicaceae: evidence from three loci and morphology. *Syst Bot* 27: 318–32.
- Ball PW (1993). *Barbarea*. In: Tutin TG, Burges NA, Chater AO, Edmondson JR, Heywood VH, Moore DM, Valentine DH, Walters SM, Webb DA, editors. *Flora Europaea*, Vol. 1. Psilotaceae to Platanaceae. 2nd ed. Cambridge, UK: Cambridge University Press, pp. 342–343.
- Beilstein MA, Al-Shehbaz IA, Kellogg EA (2006). Brassicaceae phylogeny and trichome evolution. *Am J Bot* 93: 607–619.
- Beilstein MA, Al-Shehbaz IA, Mathews S, Kellogg EA (2008). Brassicaceae phylogeny inferred from *phytochrome A* and *ndhF* sequence data: tribes and trichomes revisited. *Am J Bot* 95: 1307–1327.
- Chen S, Xia T, Chen S, Zhou Y (2005). RAPD profiling in detecting genetic variation in endemic *Coelonema* (Brassicaceae) of Qinghai-Tibet plateau of China. *Biochem Genet* 43: 189–201.
- Couvreur TLP, Franzke A, Al-Shehbaz IA, Bakker FT, Koch MA, Mummenhoff K (2010). Molecular phylogenetics, temporal diversification, and principles of evolution in the mustard family (Brassicaceae). *Mol Biol Evol* 27: 55–71.
- Crema S, Cristofolini G, Rossi M, Conte L (2009). High genetic diversity detected in the endemic *Primula apennina* Widmer (Primulaceae) using ISSR fingerprinting. *Plant Syst Evol* 280: 29–36.
- Davis PH (1965). *Flora of Turkey and the East Aegean Islands*. Edinburgh, UK: Edinburgh University Press.
- Ekim T, Koyuncu M, Vural M, Duman H, Aytaç Z, Adıgüzel N (2000). *Türkiye Bitkileri Kırmızı Kitabı (Eğrelti ve Tohumlu Bitkiler)*. Ankara, Turkey: Türkiye Tabiatını Koruma Derneği ve Van Yüzüncü Yıl Üniversitesi (in Turkish).
- Ellstrand NC, Elam DR (1993). Population genetic consequences of small population size: implications for plant conservation. *Annu Rev Ecol Syst* 24: 217–242.
- Franzke A, Pollmann K, Bleeker W, Kohrt R, Hurka H (1998). Molecular systematics of *Cardamine* and allied genera (Brassicaceae): ITS and non-coding chloroplast DNA. *Folia Geobot* 33: 225–240.
- Fu CX, Qiu YX, Kong HH (2003). RAPD analysis for genetic diversity in *Changium smyrnioides* (Apiaceae), an endangered plant. *Bot Bull Acad Sin* 44: 13–18.
- Hall TA (1999). BioEdit: a user-friendly biological sequence alignment editor and analysis program for Windows 95/98/NT. *Nucl Acid S* 41: 95–98.
- Hamrick JL, Godt MJW (1989). Allozyme diversity in plant species. In: Brown AHD, Clegg MT, Kahler AL, Weir BS, editors. *Plant Population Genetics, Breeding and Genetic Resources*. Sunderland, MA, USA: Sinauer, pp. 43–63.
- Hamrick JL, Godt MJW (1996). Effects of life history traits on genetic diversity in plant species. *Philos T Roy Soc B* 351: 1291–1298.
- Huang Y, Ji K, Jiang Z, Tang G (2008). Genetic structure of *Buxus sinica* var. *parvifolia*, a rare and endangered plant. *Sci Hortic* 116: 324–329.
- Jaccard P (1908). Nouvelles recherches sur la distribution florale. *Bull Soc Vaud Sci Nat* 44: 223–270 (in French).
- Kimura M, Crow JF (1964). The number of alleles that can be maintained in a finite population. *Genetics* 49: 725–38.
- Koch M, Haubold B, Mitchell-Olds T (2001). Molecular systematics of the Brassicaceae: Evidence from coding plastidic *matK* and nuclear *Chs* sequences. *Am J Bot* 88: 534–544.
- Kumar NS, Gurusubramanian G (2011). Random amplified polymorphic DNA (RAPD) markers and its applications. *Sci Vis* 11: 116–124.
- Larkin MA, Blackshields G, Brown NP, Chenna R, McGettigan PA, McWilliam H, Valentin F, Wallace IM, Wilm A, Lopez R et al. (2007). ClustalW and ClustalX version 2. *Bioinformatics* 23: 2947–2948.
- Liu L, Zhao B, Tan D, Wang J (2012). Phylogenetic relationships of Brassicaceae species based on *matK* sequences. *Pak J Bot* 44: 619–626.
- Loveless MD, Hamrick JL (1984). Ecological determinants of genetic structure in plant populations. *Ann Rev Ecol Syst* 15: 65–96.
- Nei M (1973). Analysis of gene diversity in subdivided populations. *P Natl Acad Sci USA* 70: 3321–3323.
- Nybohm H, Bartish IV (2000). Effects of life history traits and sampling strategies on genetic diversity estimates obtained with RAPD markers in plants. *Perspect Plant Ecol Evol Syst* 312: 93–114.

- Pannell JR, Charlesworth B (2000). Effects of metapopulation processes on measures of genetic diversity. *Philos T Roy Soc B* 355: 1851–1864.
- Primack RB (2010). *Essentials of Conservation Biology*. 5th ed. Sunderland, MA, USA: Sinauer Associates.
- Qi XH, Zhang MF, Yang JH (2007). Molecular phylogeny of Chinese vegetable mustard (*Brassica juncea*) based on the internal transcribed spacers (ITS) of nuclear ribosomal DNA. *Genet Resour Crop Evol* 54: 1709–1716.
- Rich TCG (1987). The genus *Barbarea* R.Br. (Cruciferae) in Britain and Ireland. *Watsonia* 16: 389–396.
- Shikano T, Shimada Y, Herczeg G, Merilä J (2010). History vs. habitat type: explaining the genetic structure of European nine-spined stickleback (*Pungitius pungitius*) populations. *Mol Ecol* 19: 1147–1161.
- Slatkin M (1987). Gene flow and the geographic structure of populations. *Science* 236: 787–792.
- Sözen E, Özyayın B (2009). A preliminary study on the genetic diversity of the critically endangered *Centaurea nivea* (Asteraceae). *Ann Bot Fenn* 46: 541–548.
- Sozen E, Ozaydin B (2010). A study of genetic variation in endemic plant *Centaurea wiedemanniana* by using RAPD markers. *Ekoloji* 19: 1–8.
- Tajima F (1989). Statistical methods to test for nucleotide mutation hypothesis by DNA polymorphism. *Genetics* 123: 585–595.
- Trindade H, Sena I, Gonçalves S, Romano A (2012). Genetic diversity of wild populations of *Tuberaria major* (Cistaceae), an endangered species endemic to the Algarve region (Portugal), using ISSR markers. *Biochem Syst Ecol* 45: 49–56.
- Warwick SI, Al-Shehbaz IA (2006). Brassicaceae: Chromosome number index and database on CD-Rom. *Pl Syst Evol* 259: 237–248.
- White TJ, Bruns T, Lee S, Taylor J (1990). Amplification and direct sequencing of fungal ribosomal RNA genes for phylogenetics. In: Innis MA, Gelfand DH, Sninsky JJ, White TJ, editors. *PCR Protocols: A Guide to Methods and Applications*. San Diego, CA, USA: Academic Press, pp. 315–322.
- Williams JGK, Kubelik AR, Livak KJ, Rafalskil JA, Tingey SV (1990). DNA polymorphisms amplified by arbitrary primers are useful as genetic markers. *Nucleic Acids Res* 18: 6531–6535.
- Wright S (1951). The genetical structure of populations. *Ann Eugenetic* 15: 323–354.
- Yeh FC, Boyle T, Rongcai Y, Ye Z, Xiyan JM (1999). POPGENE Version 1.32: Microsoft Windows-Based Freeware for Population Genetic Analysis. Edmonton, AB, Canada: University of Alberta.
- Zhang XP, Li XH, Qiu YX (2006). Genetic diversity of the endangered species *Kirengeshoma palmata* (Saxifragaceae) in China. *Biochem Syst Ecol* 34: 38–47.
- Zhao B, Liu L, Tan D, Wang J (2010). Analysis of phylogenetic relationships of Brassicaceae species based on *Chs* sequences. *Biochem Syst Ecol* 38: 731–739.

Copyright of Turkish Journal of Botany is the property of Scientific and Technical Research Council of Turkey and its content may not be copied or emailed to multiple sites or posted to a listserv without the copyright holder's express written permission. However, users may print, download, or email articles for individual use.